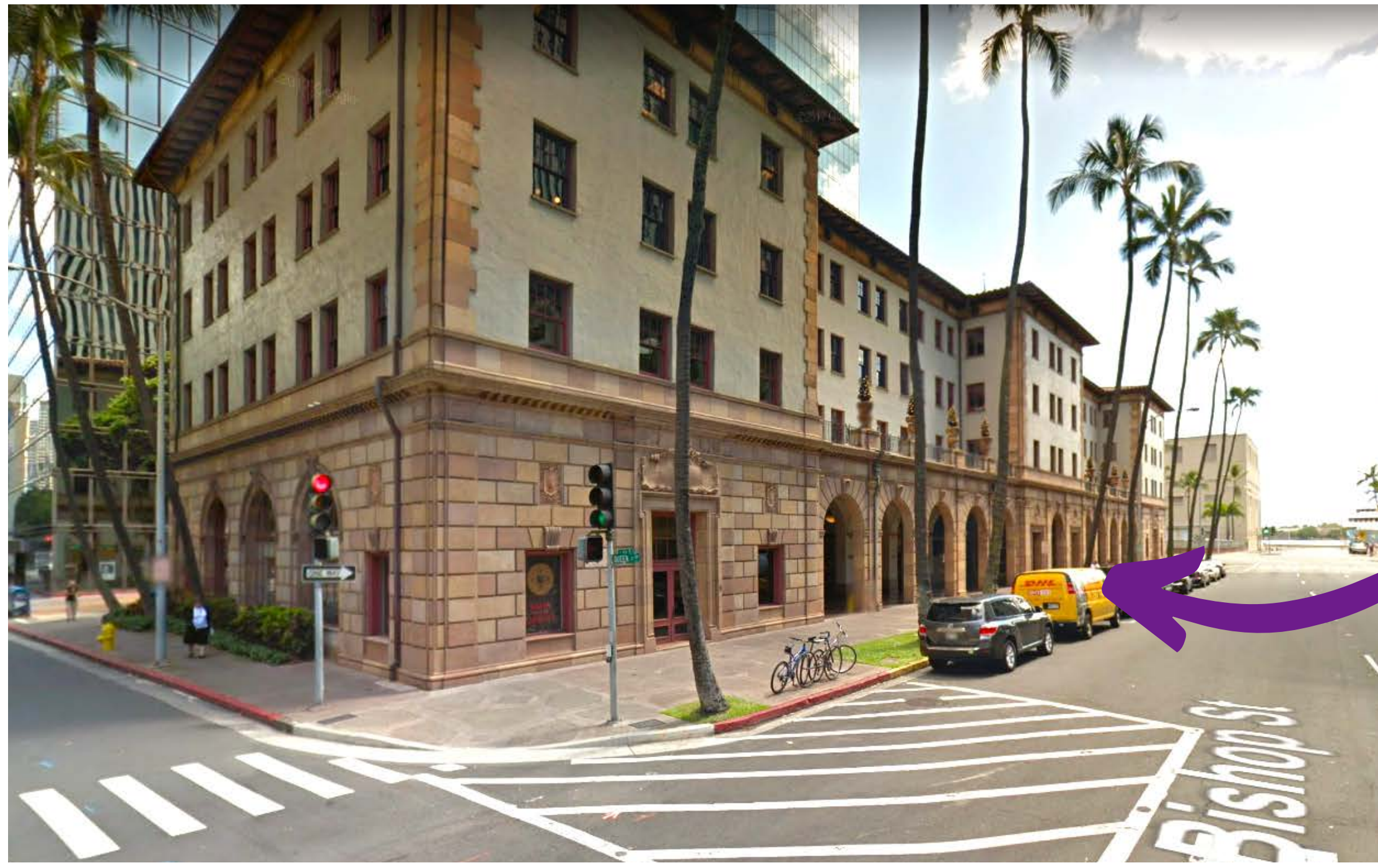


**We look forward to meeting you!  
Here are some tips to plan your visit.**

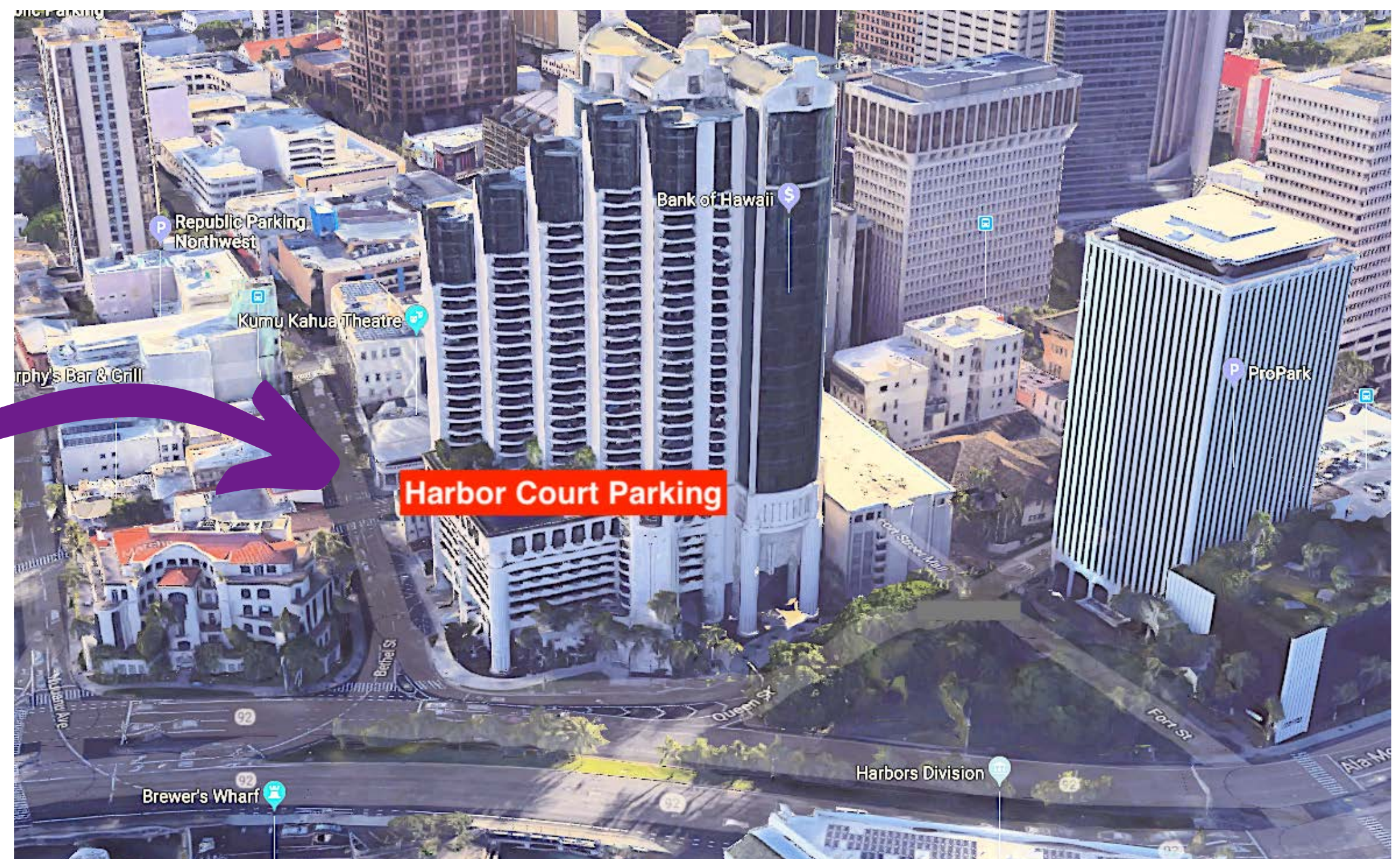


Our office is located on  
the 2nd floor of the  
**Dillingham Transportation Building**

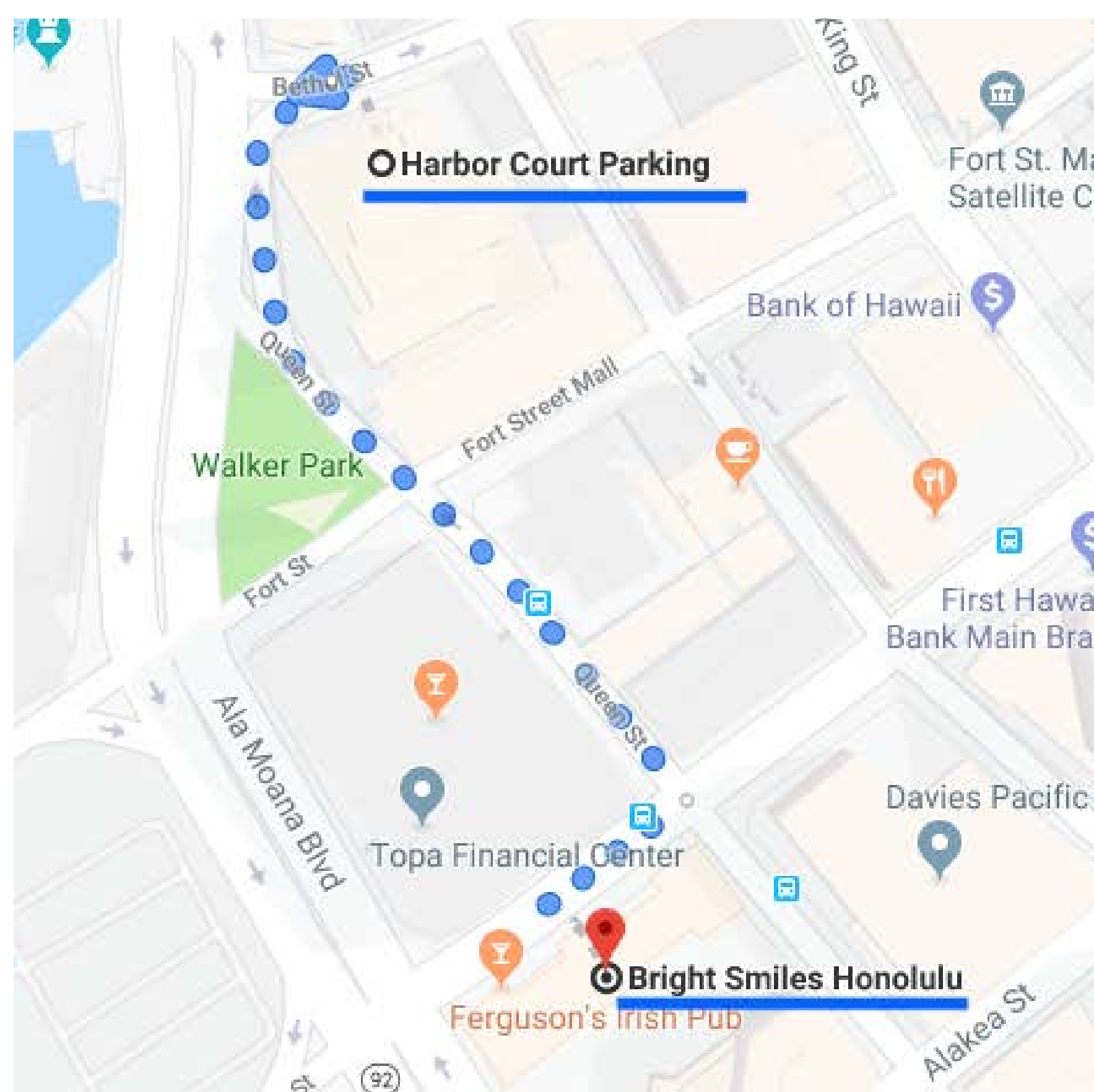
735 Bishop St. #211

We validate parking at  
**Harbor Court Parking**  
847 Bethel St.

3 minute walk from our office



## **Walk to Bright Smiles from Harbor Court**



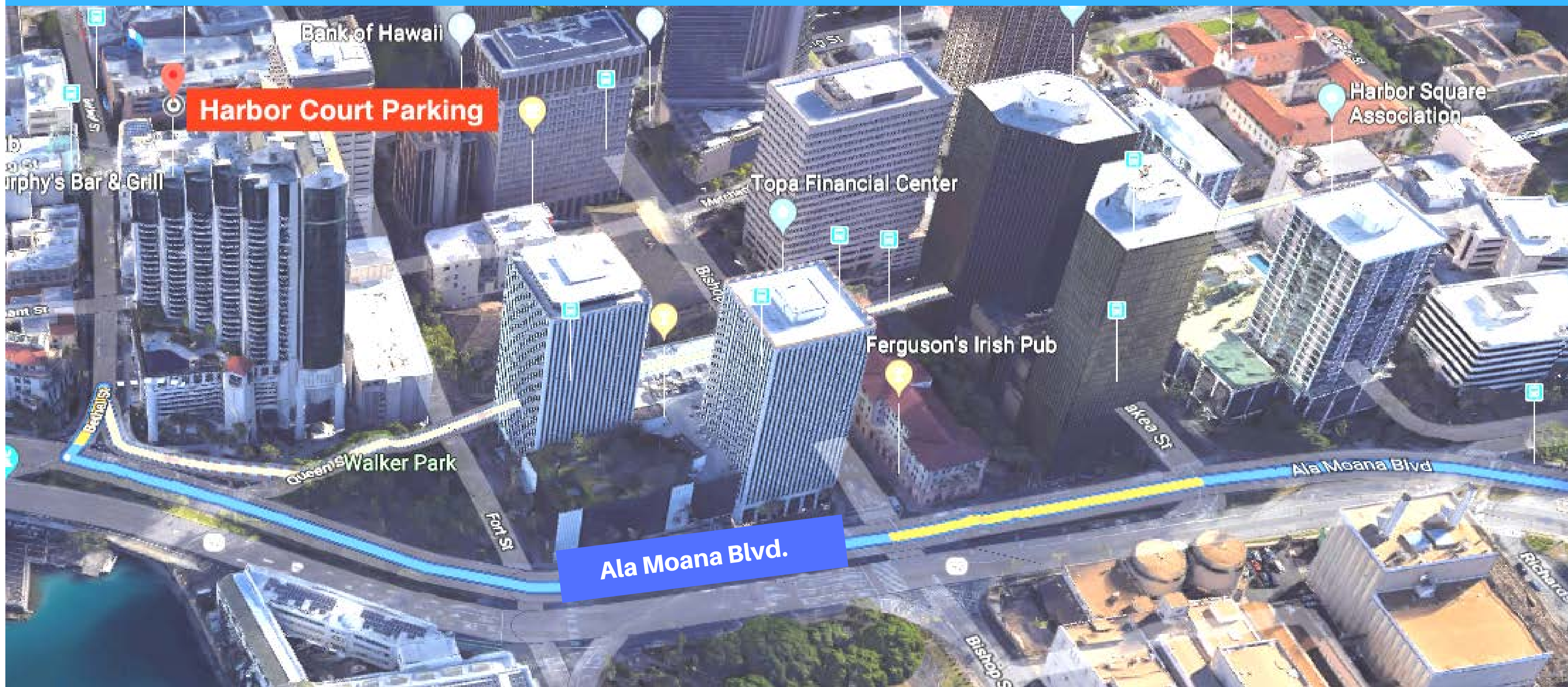
1. Exit parking elevators, turn left onto Queen St.
2. Walk along Queen St.
3. Cross the Queen St. & Bishop St. intersection
4. Enter the Dillingham Transportation Building
5. Take the elevator to the 2nd floor
6. Exit the elevator and turn right

**We'll be at the end of the hall!**



**From Waikiki / East Ala Moana Blvd.**

1. Turn onto Ala Moana Blvd.
2. Turn right at Bethel Street
3. Take immediate right into parking structure



**From West**

1. Merge onto H1 East towards Honolulu
2. Take exit 21A toward Pali Hwy and keep right
3. Make a right onto Pali Hwy.
4. Stay on Pali Hwy and keep left at the fork to Bishop St.
5. Take a right onto Queen St. and keep right at the fork
6. Make a right into garage on Bethel St.

